

**PERSONAL**  
VIRGIN INDIAN HAIR SUPPLIER *Touch*

P.O. Box 720212  
Houston TX, 77272

Phone: (713) 829-6960  
Email:

[personaltouchhair@gmail.com](mailto:personaltouchhair@gmail.com)

*You can be assured of  
excellent quality and  
service from Personal  
Touch Hair. We are pleased  
to be of service and are  
always on hand to assist our  
customers.*

**Visit Us on the Web**  
[www.IndianHairTx.com](http://www.IndianHairTx.com)



**PERSONAL**  
VIRGIN INDIAN HAIR SUPPLIER *Touch*

## Virgin Indian Hair

### Extensions

Beautiful textures;  
Straight, Body Wave,  
Deep Wave and Curly  
Lengths from 10" - 32"

### Full Lace Wigs

In-stock and Custom orders

Beautiful textures;

Indian Remy and special  
order textures: Chinese  
Remy, Malaysian Remy,  
Mongolian Remy and  
Burmese Remy



## Lace Frontal 1/2 wig

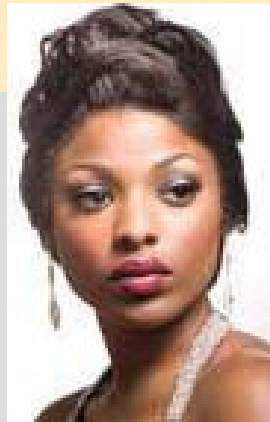
In-stock and Custom  
orders

Beautiful textures;  
Straight, Body Wave,  
Deep Wave and Curly

### Lace Closures

3 x 3, 4 x 5 1/2, 7 x 9

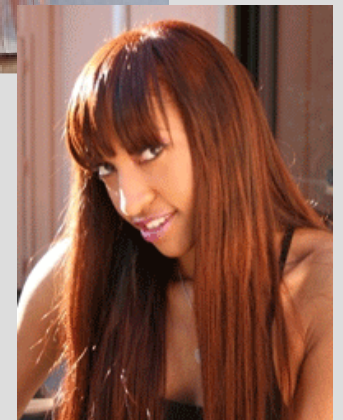
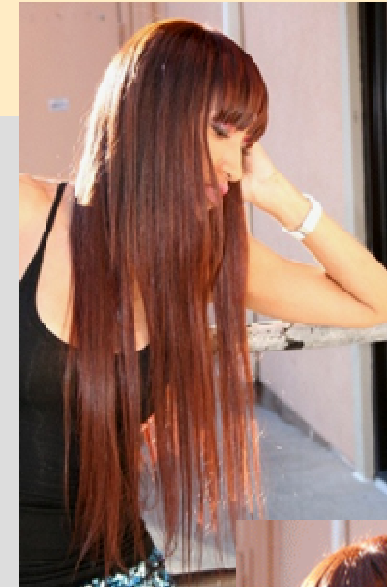
*In-stock*



## Fusion Tips

### Braiding Hair

Beautiful textures;  
Straight, Body Wave,  
Deep Wave and Curly  
Lengths from 16" - 24"



# PERSONAL

VIRGIN INDIAN HAIR SUPPLIER

*Touch*

P.O. Box 720212  
Houston TX, 77272

Phone: (713) 829-6960

Email:

[personaltouchhair@gmail.com](mailto:personaltouchhair@gmail.com)

Visit Us on the Web  
[www.IndianHairTx.com](http://www.IndianHairTx.com)

*You can be assured of  
excellent quality and  
service from Personal  
Touch Hair. We are pleased  
to be of service and are  
always on hand to assist our  
customers.*



# PERSONAL

VIRGIN INDIAN HAIR SUPPLIER

*Touch*

## Virgin Indian Hair

### Extensions

Beautiful textures;  
Straight, Body Wave,  
Deep Wave and Curly  
Lengths from 10" - 32"

### Full Lace Wigs

In-stock and Custom orders

Beautiful textures;

Indian Remy and special  
order textures: Chinese  
Remy, Malaysian Remy,  
Mongolian Remy and  
Burmese Remy



### Lace Frontal 1/2 wig

In-stock and Custom  
orders

Beautiful textures;  
Straight, Body Wave,  
Deep Wave and Curly

### Lace Closures

3 x 3, 4 x 5 1/2, 7 x 9

*In-stock*



### Fusion Tips

### Braiding Hair

Beautiful textures;  
Straight, Body Wave,  
Deep Wave and Curly  
Lengths from 16" - 24"

